

Air Management Specialists



POWERAID® THROTTLE BODY SPACERS

Part No. Description

GM

100-701	4BBL Holley
100-702	2BBL Holley
100-705	Quadrajct
200-512	Silverado 4.8, 5.3, 6.0L Vortec '99-'01
200-514	GM 4.8L, 5.3L, 6.0L, '01-'02 8.1L '02
200-520	C/K 5.0-5.7 Vortec "Classic"(3) '96-'99
200-522	5.7 F-Body '85-'92 · Vette '85-'91
200-530	C/K 7.4 '96-'00
200-540	C/K 4.3, 5.0, 5.7, & S-10 94-95 4.3 '87-'95
200-550	C/K 7.4 '91-'95
200-551	C/K R/V 7.4 '87-'90
200-580	S-10 4.3 '96-'02 · Silverado 4.3 '96-'02
200-581	S-10 4.3 TBI '87-'93
200-582	2.8 V6 S-10 '86-'90
200-583	3.1 V6 Lumina '96-'99
200-584	Impala/Grand Prix 3.8L '99-'02
200-586	Envoy / Trailblazer 4.2L '02

Dodge

300-560	Ram 3.9, 5.2, 5.9 '92-'02
300-561	Voyager 3.0-3.8 '87-'00
300-562	Dodge 3.5L / FI Intrepid '93-'97
300-565	Dodge V-10 Ram '94-'01
300-567	Dodge Ram 4.7L '02
300-568	PT Cruiser 2.4L '01-'02
300-570	Dakota/Durango 3.9, 5.2, 5.9 '97-'02
300-575	Dakota/Durango 4.7 '00-'01

Jeep

310-510	4.0L Jeeps '91-'99
310-511	2.5L Jeeps '91-'01
310-513	4.0L Jeeps '00-'01

Ford

400-507	Ford Ranger 4.0L SOHC SportTrac '01
400-517	5.0L Explorer/Mountaineer '98
400-518	4.6L Crown Victoria '96-'00
400-519	Mustang V-6 3.8 '94-'96
400-521	Powerstroke 7.5L DSL '01-'02
400-525	5.0 Mustang '86-'87
400-526	5.0 Mustang '88-'93
400-527	F150/Bronco 5.0, 5.8 '87-'95
400-528	F250/350 7.5 '91-'95
400-529	5.0 Mustang '94-'95
400-588	Ranger 2.5L '98-'00
400-590	4.6L F150/Expedition '97-'02
400-591	F150/Expedition 5.4L '97-'02
400-592	99-01 Super Duty V-10
400-593	1.6 300 C.I. F-150 '87-'96
400-594	3.8 Mustang '99-'01
400-595	Powerstroke '99-'00
400-596	4.2 V6 F-150 '97-'00
400-597	5.4L S/D '99-'02
400-598	4.0L Explorer XLT (SOHC ONLY) '99-'00

Toyota

510-502	V6 3.4L Tacoma/4Runner '95-'01
510-566	Tundra V8 4.7 '00-'01

Nissan

520-505	Frontier/Pathfinder 3.3L '99-'02
---------	----------------------------------

Additional applications available. Please call for info.



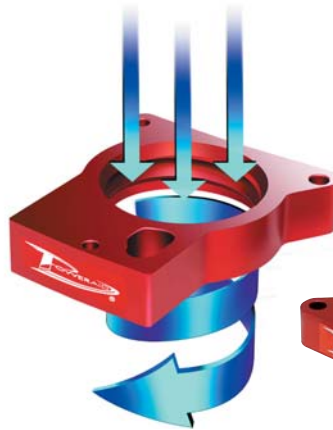
THROTTLE BODY SPACERS

- Aircraft Quality Billet Aluminum
- Installs in Minutes
- No Drilling or Cutting Required



All hardware is included with each POWERAID Kit.

400-507



200-520



300-567



200-586



300-928

MODULAR INTAKE TUBES

- Increased Air Flow
- Use with Stock Air Box or Quickfit Intake System
- Complete with Premium Hardware

310-927



AIRAID® MODULAR INTAKE TUBES

Part No. Description

300-925	M.I.T Dodge Ram 4.7L ONLY '02-'03
300-928	M.I.T Dodge 5.9L Cummins Diesel ONLY '03
310-927	M.I.T. Jeep Grand Cherokee 4.7L ONLY '99-'02

Throttle Body Spacers • Modular Intake Tubes

Thousands more products are available, if you don't see what you're looking for please ask one of our salesperson's.



BULLY DOG TECHNOLOGIES

MUSCLE FOR YOUR DIESEL

Bully Dog Performance Parts and Systems For Diesel Pickups

The Power Hound For the Ford Power Stroke®



Power Hounds are designed to add power and improve exhaust gas temperature in the 6.0 and 7.3 liter Ford Power Stroke

Part #	Part	Year	HP	Torque	Installation
041060	Power Hound 6.0L	2003	70	150	30 minutes
041073	Power Hound 7.3L	1999-2003	60	130	30 minutes

Dyno-Dominator for the Chevy Duramax Engine



Part #	Part	Year	HP	Torque	Installation
043066	Dyno Dominator	2001-2003	70-110	140-220	30 min

The new Dyno Dominator for the Chevy Duramax improves throttle response, drivability and towing performance. As a plug-in module that installs under the hood, it's an easy way to add up to 4 power levels with gains from 70 - 110 hp and 140 - 220 ft. lbs. of torque. The Dyno Dominator also comes with a stock setting.

Torque Dog Plus for the Dodge 12 & 24 Valve Cummins Engine

The Torque Dog Plus Power Chip is a plug in module that adds up to 70 hp and increases torque by 181 ft. lbs. Installs in less than 5 minutes.



Part #	Part	Valve	Year	HP	Torque	Installation
042980	Torque Dog	24	1998-2000	65	170	30 minutes
042001	Torque Dog	24	2001	65	170	30 minutes
042002	Torque Dog	24	2002	65	170	30 minutes
042003	Torque Dog	24	2003	80	200	30 minutes

4-WHEEL TRUCK & SUV



BULLY DOG TECHNOLOGIES

MUSCLE FOR YOUR DIESEL

Bully Dog Exhaust Systems

Our rapid flow exhaust systems, made of 14 gauge T304 stainless steel, boast the lowest degree bends in the industry.

Designed to be a free flowing, low back pressure system, Bully Dog Exhaust Systems on the dyno have lowered exhaust temperature by as much as 200 degrees and provided a 15-20 hp increase while reducing exhaust temperatures by 200°. Our T304 stainless steel system offers a lifetime warranty to the original owner of the vehicle. With this system, the turbo generates air more freely for a more efficient burn.

Available in either 4" or 5" diameters.

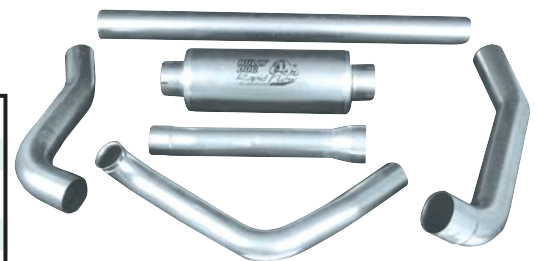


Dodge Exhaust Systems

Part #	Part	Inch	Valve	Year	HP	Torque	Installation
182030	Stainless Steel Exhaust	4"	12 24	1994-1998 1998-2002	15	30	2 hours
182010	Rapid Flow Aluminum Exhaust	4"	12 24	1994-1998 1998-2002	15	30	2 hours
182050	Rapid Flow Aluminum Exhaust	4"	24	2003	15	30	2 hours
182020	Rapid Flow Aluminum Exhaust	5"	12 24	1994-1998 1998-2002	15-20	30-40	2 hours

Ford Exhaust Systems

Part #	Part	Year	HP	Torque	Installation
181014	3" Down Pipe	1994-1998	8-10	16-20	1 hour
181040	4" Alum. Cat Back Exhaust	1994-1998	15	30	1 hour
181030	4" Stainless Steel Exhaust	1999-2002	15	30	1 hour
181010	4" Rapid Flow Aluminum Exhaust	1999-2003	15	30	1 hour
181020	5" Rapid Flow Aluminum Exhaust	1999-2002	15-20	30-40	1 hour



Chevy Exhaust System

Part #	Part	Inch	Year	HP	Torque	Installation
183010	Rapid Flow Aluminum Exhaust	4"	2001-2003	15	30	2 hours
183010	Stainless Steel Exhaust	4"	2001-2003	15	30	2 hours

4-WHEEL TRUCK & SUV

Thousands more products are available, if you don't see what you're looking for please ask one of our salesperson's.



LIGHT TRUCK MEGASHIFTER

Includes a taller base and an adjustable floor mount for proper installation. Comes with neutral safety and back-up light switch, lighted gear indicator, aluminum T-handle and cable. For 3 & 4-speed trans. Reverse lock-out meets NHRA and IHRA requirements.

Part No. 80680



AUTOMATIC 3-4 SPEED FLOOR SHIFTER

Features an 11" chrome plated solid steel stick. Universal GM, Mopar & Ford.

Part No. 7668



PICKUP TRUCK 3 SPEED MANUAL FLOOR SHIFTER

Features an 18" chrome plated solid steel stick. Universal GM, Mopar & Ford.

Part No. 7667



PRO-MATIC 2 RATCHET SHIFTER

Ratchet shifter for automatic transmissions is engineered for years of precise trouble-free shifting. Ideal for street or strip use. Pro-Matic's full forward ratchet action permits use with standard or reverse pattern valve bodies. An added feature is the positive reverse lock-out, an NHRA/IHRA requirement. Also available for trucks.

APPLICATION

GM, Ford, Mopar trucks

PART NO.

383 8510

INDY PICKUP TRUCK 3-SPEED SHIFTER

A perfect replacement for old floor shifters, or an ideal conversion from column shifters. Complete with all linkage, mounting hardware, and easy to follow installation guide. Use optional Boot and Plate #114 8429 for finished appearance.

CHEVROLET and GMC: 1969 and later. All 2WD with Saginaw, Muncie and Tremec transmission. **FORD:** 1963 and later. All 2WD with Ford and Tremec transmissions.

Part No. 501 0016



COMPETITION/PLUS SHIFTER

For GM Trucks - Late model C-K Series & S-10 Series pickups equipped with New Venture 5-sp. transmission.

APPLICATION

94-97 Chevy/GMC CK Series 1/2 ton, 3/4 ton
95-97 Chevy/GMC S-Series

PART NO.

391 0121
391 0111



MASTERSHIFT 3-SPEED SHIFTER

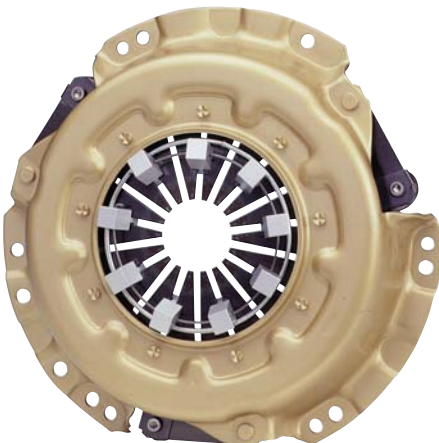
Provides precise gear selection and dependable long life. Both a replacement floor shifter as well as column shift conversion. Installation kits are sold separately.

APPLICATION

APPLICATION	PART NO.
55-66 Chevy all 1/2 ton PU (341) Chevy transmission	366 6809
Shifter installation kit	367 3112
67-68 Chevy 8 cyl. 1/2 ton PU (343) Saginaw transmission	366 6809
69 Chevy 6 & 8 cyl. 1/2 ton PU (343) Saginaw transmission	366 6809
Shifter installation kit	367 7143
69-81 Chevy all 1/2 & 3/4 ton 2WD, also Blazer & Suburban (343) Saginaw or (351) Muncie transmission	366 6809
68-81 GMC all 1/2 & 3/4 ton 2WD, (343) Saginaw,	
68-77 1/2 & 3/4 ton 2WD (351) Muncie transmission	366 6809
Shifter installation kit	367 0006
66-77 Ford Bronco 8 cyl. (333) Ford T&C transmission	366 6901
Shifter installation kit	367 0013
63-79 Ford 1/2 ton PU 2WD, (333) Ford T&C transmission	366 6809
Shifter installation kit	367 0027



4-WHEEL TRUCK & SUV



CENTERFORCE II

Provides 60% greater holding capacity over a standard factory clutch. It is recommended for use with mildly modified vehicles used for street and strip, 4 wheel drive & off road, also heavy duty towing and commercial applications.

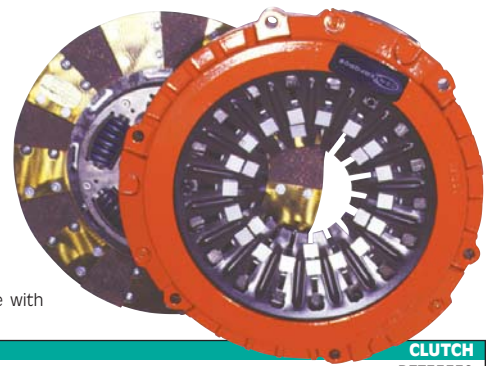
APPLICATION

APPLICATION	DISC	CLUTCH
70-95 Chevy Most w/305 Truck, 11" x 1-1/8" x 10"	383735	CFT165552
74-95 Chevy C, K, R, V, G, P10, P20, P30 Series, F/S Blazer, Suburban, Silverado, Tahoe, 8 Cyl., 74L 454" Eng., 12" x 1-1/8" x 10"	384024	CFT361909
74-95 Chevy C, K, R, V, G, P10, P20, P30 Series, F/S Blazer, Suburban, Silverado, Tahoe, 8 Cyl., 5.7L 350" Eng. w/C, K Series, 12" x 1-1/8" x 10"	384024	CFT361909
88-94 Ford Bronco, 8 Cyl. 5.8L 351" Eng., 11" x 1-1/16" x 10"	281226	CFT360049
88-95 Ford Bronco, 8 Cyl. 5.0L 302" Eng., 11" x 1-1/16" x 10"	281226	CFT360049
86-99 Jeep CJ Series, Cherokee, Wagoneer, Wrangler, 6 Cyl., 4.0L 242" & 4.2L 258" Eng., 10-1/2" x 1-1/8" x 10"	384193	CFT361890
76-79 Jeep CJ Series, Cherokee, Wagoneer, Wrangler, 8 Cyl., 5.0L 305" Eng., 10-1/2" x 1-1/16" x 10"	384180	CFT361675
80-83 Jeep CJ Series, Cherokee, Wagoneer, Wrangler, 8 Cyl., 5.0L 305" Eng., 10-1/2" x 1-1/8" x 10"	384193	CFT361675
93-96 Toyota 4-Runner 2376 cc, 22RE Eng., 9-1/8" x 21" x 1-1/8"	Included	CFT522018
92-08-95 Toyota Pick Up 2376 cc, 22RE Eng. 4WD Only, 9-1/8" x 21" x 1-1/8"	Included	CFT522018
95-98 Toyota Tacoma 2438 cc, 2RZF 2WD, 9-1/8" x 21" x 1-1/8"	Included	CFT522018

CENTERFORCE I

Offers 30% more holding capacity than a stock "OEM" clutch while maintaining a stock pedal feel. This system is recommended as the finest quality upgrade for the OEM clutch.

APPLICATION	DISC	CLUTCH
70-95 Chevy Most w/305 Truck, 11" x 1-1/8" x 10"	CFC.383735	CF165552



DUAL FRICTION

Generates up to 90% increase in holding capacity over stock systems. This clutch/disc set is designed for street use with engines producing "high horsepower & torque", and any radically altered high performance street vehicles.

APPLICATION	CLUTCH
70-95 Chevy Most w/305 Trucks, 11" x 1-1/8" x 10"	DF735552
85-95 Chevy C, K, R, G, P10, P20, P30 Series, Full Size Blazer, Suburban, Silverado, Tahoe, 8 Cyl., 5.7L 350" Eng., 12" x 1-1/8" x 10"	DF024909
88-00 Dodge Trucks w/Cummins Turbo Diesel, 12" x 1-1/4" x 10"	DF989984
01 Dodge Trucks w/Cummins Turbo Diesel, 13" x 1-3/8" x 10"	DF935023
00 Dodge Dakota, 4.7L, 1-1/8" x 10" x 11"	DF972972
99-00 Dodge Ram 1500/2500/3500, 5.9L Turbo Diesel, 1-1/4" x 10" x 12-1/4"	DF989984
01 Dodge Ram 1500/2500/3500, 5.9L Turbo Diesel HO, 1-3/8" x 10" x 13"	DF935023
98-00 Dodge R1500, R2500, R3500, 10 Cyl., 8.0L 488" Eng., 12-1/4" x 1-1/4" x 10"	DF989984
93-97 Ford Explorer, 6 Cyl., 4.0L 244" Eng., 10" x 1" x 23"	DF116116
95-98 Ford F-Series, 6 Cyl., 4.9L 300" Eng., 11" x 1-1/16" x 10"	DF226049
88-92 Ford F-Series, 8 Cyl., 5.0L 302" Eng. 4 Spd., 11" x 1-1/16" x 10"	DF226049
93-97 Ford F-Series, 8 Cyl., 5.0L 302" Eng. 5 Spd., 11" x 1-1/16" x 10"	DF226049
86-99 Jeep CJ Series Cherokee, Wagoneer, Wrangler 6 Cyl., 4.0L 242" & 4.2L 258", 10-1/2" x 1-1/8" x 10"	DF193890
93-96 Toyota 4-Runner 2376 cc, 22RE Eng., 9-1/8" x 21" x 1-1/8"	DF522018
92-08-95 Toyota Pick Ups 2376 cc, 22RE Eng. 2WD, 8-7/8" x 21" x 1-1/8"	DF517010
95-98 Toyota Tacoma 2438 cc, 2RZF 2WD, 9-1/8" x 21" x 1-1/8"	DF522018



IAS® SHOCK ABSORBERS

Edelbrock's Performer IAS® shocks feature the patented Inertia Active System (IAS). This exclusive design switches instantly between a soft and a firm circuit for superior handling and a smooth ride. No other shock has our patented inertia valve. Under smooth driving conditions, the Edelbrock shock utilizes the firm or high force circuit. Handling is crisp with excellent vehicle control because this circuit is tuned to control chassis movement and deliver optimum performance. Under rough driving conditions, Edelbrock shocks utilize the patented Inertia Valve and special ports to activate the soft or low force circuit. This allows the wheel to stay in contact with the road for greater stability and safety. Because the patented system has the ability to switch between the soft and firm circuits almost instantaneously, total control over rapid road surface irregularities is unparalleled with absolutely no compromise in handling as in conventional shock designs.

- **Maximum Handling & Maximum Comfort For The Best Of Both Worlds.**
- **Sport Utility Owners... Dramatically Reduces Chassis Roll For A Major Improvement In Stability**
- **4 X 4 Owners... Keeps Tires On The Trail With A Smoother Ride On The Road**
- **Passenger Car Owners... Greatly Improve Handling Without Sacrificing The Ride**

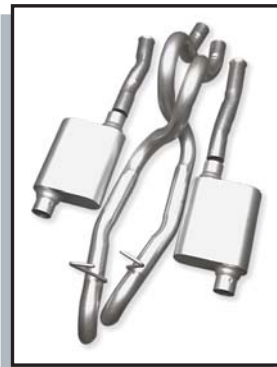
APPLICATION GM	2WD		4WD	
	FRONT	REAR	FRONT	REAR
99-00 1500 Truck	33010	34010	33012	34012
88-98 1500 Truck	3311	3411	3300	3400
82-98 S-10, Jimmy	3329	3429	3320	3420
92-99 Suburban, Yukon, Blazer	3315	3415	3303	3403
92-99 2500 Suburban	3301	3401	3305	3405
85-99 Astro/Safari Minivan	3338	3438	----	----
Dodge				
94-01 Ram 1500	3316	3496	3319	3419
94-01 Ram 2500 w/V8	3316	3416	3324	3424
94-01 Ram 2500 Diesel	3385	3485	----	----
94-01 Ram 3500 Diesel	3386	3486	3387	3487
97-01 Dakota	3384	3484	3323	3423
98-01 Durango	33405	34405	3341	3441
Jeep				
97-00 Wrangler (TJ)	----	----	3318	3418

APPLICATION	2WD		4WD	
	FRONT	REAR	FRONT	REAR
Jeep				
99-01 Grand Cherokee (all models)	33404	34404	33404	34404
93-98 Grand Cherokee (all models)	3321	3421	3321	3421
84-99 Cherokee (all models)	----	----	3328	3428
Ford				
91-94 Explorer	3308	3408	3308	3408
95-00 Explorer/Mercury Mountaineer	3309	3409	3309	3409
97-01 Expedition (without air ride suspension)	3322	3422	3360	3460
97-01 F-150 Truck	3350	3450	3351	3451
85-96 F-150 Truck	3317	3417	----	----
80-99 F-350 Truck	3359	3459	----	----
86-97 F-350 Truck	----	----	3398	3498
Land Rover				
89-98 Discovery SE7	----	----	3370	3470
Toyota				
93-98 T-100	3375	3475	3374	3474



SUPER TURBO SYSTEMS

Improved flow that comes from mandrel bent pipes makes DynaMax Systems superior. Mandrel bending maintains consistent inside diameter, increasing flow over 35% more than OE. DynaMax Systems are true "bolt-ons" following OE routings and attach directly to existing mounts for quick and easy installation. **Many more applications available.**



APPLICATION	PART NO.
88-93 GM C/K Pickup, 3.00" w/dual tail pipe	17449
88-93 GM C/K Pickup, 2.50" w/single tail pipe	17450
84-95 Ford F150 Pickup, 2.25" w/dual tail pipe	17447



SUPER TURBO MUFFLERS

Top rated in such critical categories as back pressure reductions, sound, quarter-mile power gains and improved quarter-mile times. Direct replacement for OE mufflers on Mustangs, Camaros, Corvette's and others, as well as universal fit. The leader in power, sound and appearance. **Many more applications available in both universal and direct fit.**



DESCRIPTION	PART NO.
88-93 GM C/K Pickup, 3" inlet/dual 2.50" outlet	17776

Thousands more products are available, if you don't see what you're looking for please ask one of our salesperson's.

**FLOWTECH I
STANDARD HEADERS**

Formed from specially selected .049 cold roll flash controlled tubing with thick, mandrel-formed Power Plenum™ collector. All ports are precisely fitted & finished with sturdy leakproof O-ringed port seals. Includes all mounting hardware. Electrostatically applied PPG satin black finish.



**FLOWTECH II
CERAMIC HEADERS**

All the great features of Standard Finish Headers with these added benefits. Finished with a specially formulated, NASA developed silver luster ceramic coating for longer rust & corrosion resistance. Made in USA. Not all applications listed.

APPLICATION	ENGINE	PRI TUBE	A/C	AUTO	STD	FOOTNOTES	FLOWTECH I	FLOWTECH II	
Chevrolet/GMC									
88-95 1500, 2500, 3500 PU	5.0-5.7L	1-5/8 x 3	Y	Y	Y	N Y	1,3,4,6,58,75,90	11504FLT	31504FLT
88-91 1 Ton Crew Cab	283-400	1-1/2 x 3	23	Y	N	O Y	1,3,4,6,50,58	11500FLT	31500FLT
66-72 1/2, 3/4 Ton PU	283-400	1-1/2 x 3	23	Y	N	42 42	1,4,32,58	11500FLT	31500FLT
73-87 1/2, 3/4, 1 Ton PU	283-400	1-1/2 x 3	23	Y	N	O Y	1,3,4,58	11500FLT	31500FLT
68-87 1/2, 3/4, 1 Ton PU, Blazer/Jimmy	396-454	1-3/4 x 3	Y	Y	Y	Y Y	1,3,4,6,69	11530FLT	31530FLT
67-87 Blazer/Jimmy	283-400	1-1/2 x 3	23	Y	N	O Y	1,3,4,6,58	11500FLT	31500FLT
73-91 Suburban	283-400	1-1/2 x 3	23	Y	N	O Y	1,3,4,6,58	11500FLT	31500FLT
73-91 Suburban	396-454	1-3/4 x 3	Y	Y	Y	Y Y	1,3,4,6,69	11530FLT	31530FLT
Dodge/Plymouth									
72-93 1/2, 3/4 Ton PU	273-360	1-5/8 x 2-1/2	Y	Y	N	Y Y	3,4,6,8	13500FLT	33500FLT
Ford									
69-79 F100	302W	1-5/8 x 3	Y	Y	N	Y Y	3,4,5	12500FLT	32500FLT
80-95 F100/150/250	302W	1-1/2 x 2-1/2	Y	Y	N	N N	3,4,6	12502FLT	32502FLT
80-95 F100/150/250/350	351W	1-1/2 x 2-1/2	Y	Y	N	Y Y	3,4	12504FLT	32504FLT
65-76 F-100/150/250	352-428	1-3/4 x 3	Y	Y	N	Y Y	3,4,29	12540FLT	32540FLT
Chevrolet/GMC									
88-95 1500, 2500, 3500 PU	5.0-5.7L	1-5/8 x 3	Y	Y	Y	N Y	1,3,4,6,58,75,90	11504FLT	31504FLT
88-91 1 Ton Crew Cab	283-400	1-1/2 x 3	23	Y	N	O Y	1,3,4,6,21,50,58	11500FLT	31500FLT
68-81 1/2, 3/4 Ton PU	396-454	1-3/4 x 3	Y	Y	Y	Y Y	1,3,4,6,69	11530FLT	31530FLT
73-87 1/2, 3/4 1 Ton PU	283-400	1-1/2 x 3	23	Y	N	N Y	1,3,4,6,21,58	11500FLT	31500FLT
66-72 1/2, 3/4 Ton PU	283-400	1-1/2 x 3	23	Y	N	42 42	1,4,32,58	11500FLT	31500FLT
73-91 Blazer/Jimmy K5	283-400	1-1/2 x 3	23	Y	N	N Y	1,3,4,6,21,58	11500FLT	31500FLT
69-72 Blazer/Jimmy K5	283-400	1-1/2 x 3	23	Y	N	42 42	1,4,32,58	11500FLT	31500FLT
73-81 Blazer/Jimmy K5, Suburban	396-454	1-3/4 x 3	Y	Y	Y	Y Y	1,3,4,6,69	11530FLT	31530FLT
73-91 Suburban	283-400	1-1/2 x 3	23	Y	N	N Y	1,3,4,6,21,58	11500FLT	31500FLT
66-72 Suburban	283-400	1-1/2 x 3	23	Y	N	42 42	1,3,4,32,58	11500FLT	31500FLT
Ford									
65-76 F100/150	332-428	1-3/4 x 3	Y	Y	N	Y Y	3,4	12542FLT	32542FLT
67-76 F250	332-428	1-3/4 x 3	Y	Y	N	Y Y	3,4	12542FLT	32542FLT
80-95 F100/150/250/350	302W	1-1/2 x 2-1/2	Y	Y	N	N N	3,4	12502FLT	32502FLT
80-95 F100/150/250/350	351W	1-1/2 x 2-1/2	Y	Y	N	Y Y	3,4	12504FLT	32504FLT
77-79 F150/250/350	351-400M	1-3/4 x 3	Y	Y	N	Y Y	3,4,28	12520FLT	32520FLT
80-95 Bronco	302W	1-1/2 x 2-1/2	Y	Y	N	N N	3,4	12502FLT	32502FLT
80-95 Bronco	351W	1-1/2 x 2-1/2	O	Y	Y	O O	3,4	12504FLT	32504FLT
78-79 Bronco	351-400M	1-3/4 x 3	Y	Y	N	N Y	3,4	12520FLT	32520FLT

Y=Yes, N=No, O=Not Verified

4-WHEEL TRUCK & SUV



AFTERBURNER MUFFLER

Flowtech Afterburner mufflers are your very best bet for optimum performance and awesome sound. Fully welded construction so seams won't blow out & aluminized case prevents rust & corrosion resulting in a longer life. Huge flow tubes provide blistering horsepower & performance. Fully reversible & an awesome powerful sound from sound tuned chambers, with no resonance. Limited lifetime warranty. Case length: 14", case width: 10", case height: 4".



RAPTOR MUFFLER

If you want a mean muffler that won't tear the guts from your wallet, get a Raptor. Turbo performance muffler features a unique sound rib case & aluminized, lock seal construction. Offers gigantic, high-output flow tubes to provide more horsepower, better mileage & a sound of pure performance. Case length: 13", case width: 10", case height: 4-1/2".



TERMINATOR MUFFLER

The Terminator is constructed entirely of super thick, fully-welded aluminized steel, with huge 3" inner pass tubes that reduce backpressure and increase horsepower like no other muffler can. Fully welded for strength and durability. No glass to burn or blow out. Designed to flow in either direction. Case length: 15", case width: 11", case height: 5".

APPLICATION	AFTERBURNER		PART NO. (Afterburner)	RAPTOR		PART NO. (Raptor)	TERMINATOR		PART NO. (TERMINATOR)
	IN	OUT		IN	OUT		IN	OUT	
Universal Performance	2"	2"	50320FLT	2"	2"	50050FLT	2"	2"	n/a
Universal Performance	2-1/4"	2-1/4"	50321FLT	2-1/4"	2-1/4"	50051FLT	2-1/4"	2-1/4"	50121FLT
Universal Performance	2-1/2"	2-1/2"	50322FLT	2-1/2"	2-1/2"	50052FLT	2-1/2"	2-1/2"	50122FLT
Universal Performance	3"	3"	50330FLT	3"	3"	n/a	3"	3"	50130FLT



FANTOM CAT BACK EXHAUST SYSTEMS

50-state legal bolt on performance for your late model truck and SUV. Constructed of aluminized mild steel for durability and corrosion resistance. Bolts directly to stock catalytic converter using all factory hangar locations. Polished steel tip for rugged good looks.

DESCRIPTION	PART NO.
96-00 Chevy Pickup (350, EC, SB, 2/4 WD)	655506FLT
87-96 Ford F-150/250 (4.9/302/351, Standard Cab, SB & LB, 2/4 WD)	659655FLT
87-96 Ford F-150/250 (4.9/302/351, Extended Cab, SB & LB, 2/4 WD)	659656FLT
98-00 Tahoe, Yukon, Escalade (350, 2/4 WD, 4 DR, Dual Inlet)	655516FLT



Join The Team - It's A Sound Decision! Flowmaster's State-Of-The-Art Research & Development facility provides the aftermarket with the most technologically advanced exhaust products available. Manufactured entirely in America from 16 gauge aluminized steel, inside and out, thereby greatly increasing protection against rust and corrosion. Flowmaster offers reduced back pressure for increased horsepower, torque and fuel economy, with a deep performance tone.

PERFORMANCE TRUCK & RV "BIG BLOCK" MUFFLERS

50 Series/3 Chamber

Mufflers are 5" thick by 12" wide. For ultimate sound control on big block power vehicles. Greatly reduces under hood temperature. **Heat shields are recommended.**

DESCRIPTION

3.00" Offset in/center out

PART NO.

53051

CHEVY/GMC PICKUP MUFFLER

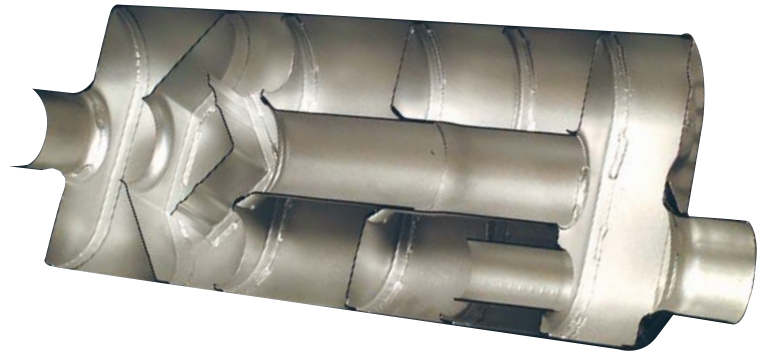
Improves horsepower and torque. 3.00" center inlet and dual 2.25" outlets.

APPLICATION

88-92 1/2 Ton w/350 engine, 40 Series/2 Chamber

PART NO.

430402



HIGH PERFORMANCE STREET, TRUCK & RV "BIG BLOCK II" MUFFLERS

70 Series

The 70 Series Big Block II is designed using a large Flowmaster case for maximum volume and efficiency. The case is two inches narrower than Flowmaster's original Big Block muffler, making for easier installation in tight applications. The 70 Series offers a mild mellow exhaust tone and incorporates a Resonant Tuning Chamber for reduced interior sound levels. It is great for tow vehicles and RV's and trucks with dual exhaust.

DESCRIPTION

3.00" Center In/Center Out
 2.50" Offset In/Center Out
 3.00" Offset In/Center Out
 3.00" Center In/Offset Out
 3.00" Offset In/Offset Out
 Dual 2.25" In/Single 3.00" Center Out
 Dual 2.25" In/Out

PART NO.

53070
 52571
 53071
 53072
 53073
 524703
 524704



EDELBROCK HEADERS for Chevy/GMC Pickups & SUVs

APPLICATION

Headers

79-87 Chevy/GMC Pick-up, Suburban with 5.0L/5.7L with A.I.R.
 83-86 Chevy/GMC Blazer, Jimmy with 5.0L/5.7L with A.I.R.
 99-00 Chevy/GMC Pick-up with 4.8L/5.3L V8 without A.I.R.

PART NO.

6527
 6527
 6500

Thousands more products are available, if you don't see what you're looking for please ask one of our salesperson's.